

Compensation

- AWP pays a maximum of 80% of the verified losses to the crop.
- Losses due to insurable perils (covered by production insurance) are distinguished from damages caused by wildlife.
- Damages caused by wildlife will be deducted from any Production Insurance claims so that damages are not double compensated.
- Minimum damage for claim eligibility is \$1000 or 20 tons for the Peace River region.
- A minimum 10% visual plant loss must have occurred for an adjustment to be considered.
- Compensation value will be determined by methodology established by AWP.

Cage Placement

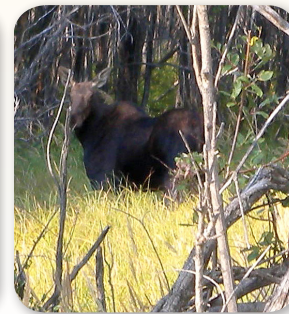
- Cages are not mandatory; however they are a useful tool in measuring the amount of wildlife damage in a field. Cages should be placed in areas of the field where the wildlife frequent. For further information on cage placement see "Utilizing Grazing Enclosures Brochure."



Specifications: 2"x 2" or 2"x 4" construction with stucco wire.
Measurements: 4' wide x 8' long x 4' high with wire on top.

Contact your nearest Ministry of Agriculture office. Ask for information on the Agriculture Wildlife Program for Wildlife Damage to Standing Forage.

Abbotsford	1-888-221-7141
Cranbrook	1-250-489-8507
Dawson Creek	1-877-772-2200
Fort St. John	1-888-822-1345
Kamloops	1-888-823-3355
Kelowna	1-888-332-3352
Oliver	1-888-812-8811
Prince George	1-800-334-3011
Williams Lake	1-800-474-6133



This brochure provides general information only; the information in this document may be subject to change.



Ministry of Agriculture

Standing Forage Brochure ver 2011-01-12

Agriculture Wildlife Program

Wildlife Damage to Standing Forage



Canada



Agriculture Wildlife Program ~ Wildlife Damage to Standing Forage

Program Details

The Agriculture Wildlife Program (AWP) will compensate qualifying forage producers whose unharvested forage crop intended for livestock feed has been damaged by wildlife.

Wildlife Definition

The AWP will include compensation for wildlife damage caused by bison, deer, elk, moose, mountain sheep, bear, cranes and waterfowl that have not been held in captivity.

Eligible Agriculture Products

AWP covers both perennial forage crops (e.g. alfalfa, clover, tame grasses, etc.) and annual forage crops (e.g. wheat, oats, barley, peas, silage corn, other cereal, etc.) used for livestock feed that is in standing crop.

Eligibility

- Applicant must provide proof of BC Assessment Farm Status.
- Applicant must provide proof of private land ownership and/or lease confirmation.
- Application to program can be made whether or not the applicant has Production Insurance. *It is recommended that applicants work with local BRMB representative to discuss complete farm risk protection options for your farm.*

- Compensation will only be paid to those participants who have a willingness to engage in on-farm mitigation and/or prevention activities.

Crops that are not Eligible

- Crops grown on land that is uninsurable for production insurance.
- Crops used for lure or intercept feeding.
- Straw or other by-products.
- Land that has not been improved by seeding of agronomic species, cultivation, and the potential to mechanically harvest.
- Crops Seeded too late to expect a normal yield.
- Volunteer crops.
- Damage caused by wildlife other than defined wildlife.
- Where livestock have entered the field prior to adjustment for that cut and the resulting damage cannot be clearly distinguished from the wildlife damage.
- Where crops were harvested and left exposed to wildlife damage due to management practices.
- Crops that have been mowed, swathed, in sheaves or stooks, baled, or in stacks and silage pits collected from the field or in storage.
- Crops intended for grain, seed or any purpose other than forage.
- Crops where losses cannot be measured.

Program Application

Producers must be registered for the program no later than the following deadlines:

Irrigated/Multiple Cuts- March 31.
Dryland/Single Cut - June 15.

- Compensation is available for multiple cuts including aftermath grazing.
- Applicants must provide name, address, age of crop, type of crop, number of acres damaged, legal description, and location and size of fields.
- Applicants are required to supply a tax reporting number and signature of authority for compensation claims.

Damage Reporting

- Producers must file a Notice of Wildlife Damage (NOWD) as soon as wildlife damage is detected, prior to harvest.
- Failure to complete a NOWD will result in field or farm ineligibility.
- Grower must be able to show adjuster where damage has occurred.